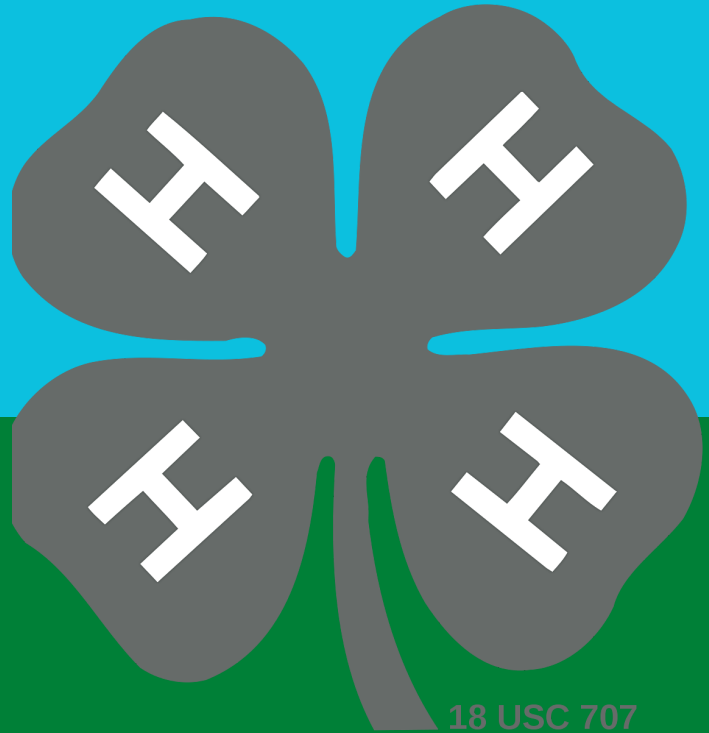
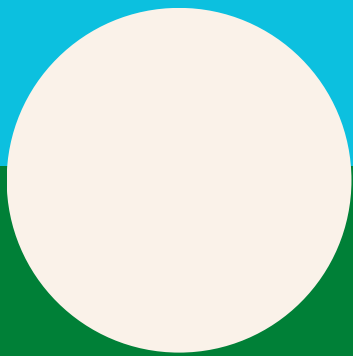


# BOSQUE COUNTY 4-H 2023-2024



18 USC 707

## 4-H HANDBOOK HANDBOOK HANDBOOK HANDBOOK

# TABLE OF CONTENTS



## **03**

General Info, Age Requirements

## **04**

Volunteers, Fundraisers

## **05**

Projects, Contests

## **06**

Major Stock Shows

## **07**

County Fair, Buyers Groups

## **08**

Recordbooks

## **09**

Scholarships & County Awards

## **10**

Meet the Team

# GENERAL INFO

Texas 4-H is an exciting and hands-on learning experience involving more than 1.1 million youth. In 4-H, you can participate in a wide variety of projects that require just a little or a whole lot of time. 4-H is the future, the future for developing community leaders.

## 4-H Mission

To offer participants opportunities to acquire knowledge, to develop life skills and to form attitudes that will enable them to become self-directing, productive and contributing members of society. The cost varies depending upon the project chosen. A member enrolled in the foods and nutrition project might use supplies from around the house to practice the skills being learned. A member who buys and raises a horse can expect to invest thousands of dollars. Your project must be realistic to your family's situation.

## Bosque County Age Categories

Cloverbud Division - Youth who are eligible to enroll in Kindergarten on September 1 of the current year and have not entered the third grade on September 1.

Junior Division - Grades 3, 4, 5. Competition for club, county and district levels.

Intermediate Division - Grades 6, 7, 8. Competition for club, county and district level.


Senior Division - Grades 9, 10, 11,12. Competition for club, county, district, state and national level.

Youth may participate in 4-H year from September 1st of 3rd grade through August 31st following completion of grade twelve, with these age restrictions:

- Minimum age - 8 (in addition to being in the 3rd grade)
- Maximum age - 18 (as of August 31, 2023)

There is a participation fee for Juniors, Intermediate and Senior 4-H members. Cost is \$25/member/year if signed up by October 31 on 4-H Online. Cost increases to \$30/member/year after this date. Cloverbud members are \$10/year.


## HOW WE KEEP YOU UPDATED



Each Monday morning, all enrolled members will receive an e-newsletter from the Extension Office. This e-newsletter has upcoming activities, deadlines and recap of events. This e-newsletter is sent to the email address used for creating your family profile on 4-H Online.



Watch our Facebook Page- [Bosque County 4-H & Youth Development](#)



Download our Google 4-H Calendar by going to [bosque.agrilife.org](https://bosque.agrilife.org). Then under the 4-H Dropdown, click on the 4-H Calendar Tab



## 4-H Volunteer Leaders

A person 18 years or older may serve as a volunteer; however, in order to serve as an adult overnight chaperone, a volunteer must be at least 21 years of age at the time of a 4-H event. At NO TIME may a member stay overnight with a volunteer or adult that is not their own parent.

To serve as a volunteer, one must apply by setting up a profile and completing a volunteer application online via 4-H Online. All 4-H volunteers must be screened through the Youth Protection Standards Program, which includes a criminal background check. Based upon each individual's role as a volunteer, additional requirements may exist, such as completion of a Child Protection Training. Upon acceptance as a 4-H volunteer, volunteers should consult with the County Extension Agent to find a position that meets their interests and the needs of the county 4-H program.

# Fundraisers!



**Sept. 9, 2023**

EACH YEAR, BOSQUE 4-H HOSTS THE "LUCKY CLOVER GOLF TOURNAMENT" AT THE BOSQUE VALLEY GOLF COURSE IN MERIDIAN. THIS EVENT IS THE PRIMARY FUNDRAISER FOR BOSQUE COUNTY 4-H.

THE PUBLIC IS INVITED TO PARTICIPATE BY PLAYING IN THE TOURNAMENT. YOUTH AND THEIR FAMILIES ARE ALL ENCOURAGED TO ASSIST WITH RECRUITING PLAYERS AND SPONSORS TO HELP RAISE FUNDS.

COMMUNITY SUPPORT ALLOWS BOSQUE COUNTY 4-H TO OFFER SCHOLARSHIPS, LEADERSHIP LABS, CAMPS, SHOOTING AND ARCHERY PROGRAMS, PARTICIPATION IN COUNTY, DISTRICT & STATE COMPETITIONS, AND MANY OTHER PROGRAMS.

THE EXTENSION OFFICE ALSO COORDINATES THE SALE OF BEEF TIPS THROUGHOUT THE YEAR. WE SELL BOXES THAT AVERAGE 20 POUNDS FOR \$100/BOX (THAT WORKS OUT TO BE ABOUT \$5.00/LB.

REMEMBER THIS FOR YOUR NEXT BIG FUNCTION OR EVENT. ALL THE PROCEEDS SUPPORT BOSQUE 4-H!!



**OUR PROGRAMS ARE SUCCESSFUL BECAUSE OF SUPPORT FROM OUR COMMUNITIES.**

# PROJECTS & CONTESTS



## PROJECT AREAS:

For those new or unfamiliar there is:

Cattle

Citizenship

Community Service

Computer Science

Consumer Education

Dairy Cattle

Dog Care & Training

Entomology

Fashion & Interior Design

Food & Nutrition

Forestry

Global Citizenship

Goats

Health & Personal Safety

Horse

Horticulture

Leadership

Meat Science

Outdoor Education & Living Skills

Photography & Video

Poultry

Public Speaking

Rabbits

Range Science

Robotics

Rocketry & Aerospace

STEM

Sheep

Shooting Sports

Sportfishing

Swine

Theater & Performance Art

Veterinary Science

Water Conservation & Education

Wildlife Fisheries

Workforce & Career Prep

Youth Entrepreneurship

To learn more about each of the projects listed above go to

<https://texas4-h.tamu.edu/projects/>

*4-H Has Sooo Many Opportunities*

## CONTESTS

Food Show

Food Challenge

Photography

Quiz Bowls

Skillathons

Judging Contests

Fashion Show & Storyboards

Duds to Dazzle

4-H Roundup

Educational Presentations

Consumer Decision Making

Shooting Sports

Horse Shows

Livestock Shows

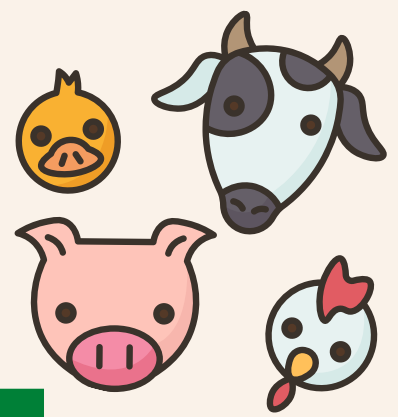
Big Bass Contest

Ag Product ID

Share the Fun (Talent Show)

Plant ID

# STOCK SHOWS



## Major Show Tag Order & Validation

Species	Tag Order	Validation
Lamb / Goat	August 2024	October 2023
Fall Heifer	August 2023	October 2023
Swine	September 2023	November 2023
Steer / Summer Heifer	April 2024	June 2024
State Fair of Texas Heart of Texas Fair	April 2024	June 2024

**\*\* Anyone not able to make the posted validation date must let the Extension Office know at least 10 days prior to the posted validation date \*\***

**\*\* Must order animal tags for major shows prior to validation \*\***

Validation does not enter an animal into a show. It simply makes it eligible for entry.

## ENTRIES

### Major Livestock Shows

Entries Due November 3, 2023, by 4 pm  
 Fort Worth Stock Show & Rodeo  
 San Antonio Livestock Exposition  
 San Angelo Stock Show & Rodeo  
 Star of Texas (Austin)  
 Houston Livestock Show & Rodeo  
 Elite Showcase

### Entries Due August 18, 2023 by 4PM

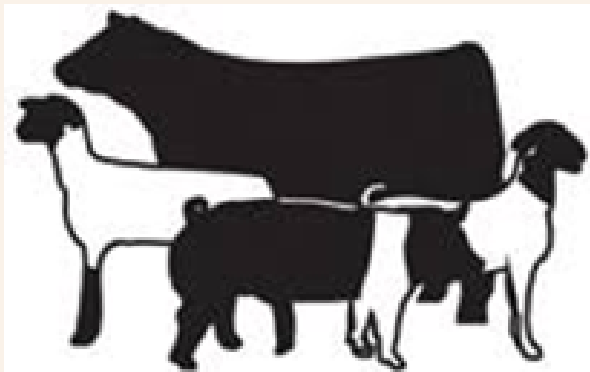
State Fair of Texas (Dallas)  
 Heart of Texas (Waco)

All livestock shows in Texas have rules governing the exhibition of animals and the fitting practices of youth livestock projects. It is the responsibility of the exhibitor and his or her parents/guardians to follow the guidelines established by show officials. Any exhibitor violating these rules may be barred from showing or receiving any prizes or monies. The Bosque County Extension Agents accept no responsibility for the exhibitor if they violate any rules. The premium catalog/rulebook/website is OFFICIAL for each livestock show.

It is the 4-H member's responsibility to check arrival times, show times and release dates and to make arrangements for travel/lodging/etc. to shows. Remember, drivers must be parents or approved screened volunteers of the Bosque County 4-H program and 4-H members may not transport themselves to 4-H events outside of county.

# COUNTY FAIR

**JUNE 4-8, 2024**



Bosque County 4-H members are eligible to participate in the Central Texas Youth Fair (CTYF). The CTYF will be held in June with a premium sale. Exhibitors must secure buyers from buyers groups or individuals and read and follow rules for each of the county fairs.

## Central Texas Youth Fair Validation

Species	Validation
Steer / Commercial Heifer	January 2024
Lamb / Goat / Swine	April 2024
Rabbit	May 2024
Poultry	Upon Delivery (Order March 2024)

A major show validation tag will automatically carry over for CTYF

## HOME ECONOMICS DIVISION

Cloverbud and 4-H members may participate in the Central Texas Youth Fair by entering food items, clothing & textile items, crafts and photography items. See CTYF Rulebook for more information and deadlines.

## BUYERS GROUPS

Buyers Groups are not part of 4-H. County Agents and staff have no connection to the buyers groups as they are not part of 4-H. Buyers groups are external support groups created by communities and/or volunteers to fundraise for the purchase of projects during the county youth fair. Youth and parents who wish to join a buyers group will need to adhere to the individual group's guidelines for participation. Participation usually involves attending buyers group meetings, fundraising in support, etc. Monies raised through the fundraisers are then distributed back to those youth who participate in their buyers groups. Buyers groups typically cover members in a specific area of the county (i.e., your 4-H Club). You can ask your County Agent about which buyers group covers your club. Joining a buyers group early will allow you more time to help participate in the requirements of the buyers group. If you choose not to join a buyers group or one is not available, and your project makes sale at CTYF, you should secure your own buyer, or you can roll the dice and hope that someone will purchase your project.



# RECORDBOOKS

4-H would not be the same without records. They are an important part of completing each project. They help you set some goals, keep track of your attendance at 4-H meetings and functions, record your demonstrations and presentations and a whole lot more. Completing your recordbook can give you a sense of personal accomplishment. It also helps you earn credit for completing the 4-H year, makes you eligible to participate in other activities and scholarships, gives you the opportunity to be recognized on the county, district and state levels. It also sets challenging goals for you.

**Recordbooks are due in early June.** Watch the 4-H Newsletter for the due date.

For more information on Texas 4-H Recordbooks and record keeping forms go to <http://texas4-h.tamu.edu/recordbooks/>



<b>Agriculture Sciences</b>	<b>Natural Resources</b>
<b>Beef</b>	<b>Photography</b>
<b>Citizenship &amp; Civic Education</b>	<b>Plant &amp; Soil Science</b>
<b>Consumer Education</b>	<b>Poultry</b>
<b>Dog Care &amp; Training</b>	<b>Public Speaking</b>
<b>Entomology</b>	<b>Rabbit</b>
<b>Fashion &amp; Interior Design</b>	<b>Science, Technology, Engineering &amp; Mathematics</b>
<b>Food &amp; Nutrition</b>	<b>Sheep</b>
<b>Gardening &amp; Horticulture</b>	<b>Shooting Sports</b>
<b>Goat</b>	<b>Swine</b>
<b>Health &amp; Personal Safety</b>	<b>Theatre &amp; Performance Arts</b>
<b>Horse</b>	<b>Veterinary Science</b>
<b>Leadership</b>	



# Scholarships

Offered to graduating senior 4-Hers at County, District and State Levels.

There are many opportunities but a few options to watch for in the newsletter include:

## **County:**

- County 4-H Scholarship - Due March
- Central Texas Youth Fair Scholarship - Due May 1
- Bosque County Hay Show - Due Spring

## **District:**

- District TAE4-HA Scholarship - Due Spring
- District TEEA Scholarship - Due Spring
- Blackland Income Growth - Due Fall

## **State:**

- State 4-H Scholarship – Due Winter
- Major Stock Shows - Check Stock Show Websites



# County Awards & Recognition

## **Gold Star Award:**

The Gold Star Award is the highest county achievement award and is intended to be received only once in a member's 4-H career. Counties receive an award quota based on the number of senior 4-H members. The award will be presented to the most deserving young people. The member must be at least 15 at the time of application and must have completed at least 3 years in 4-H, including the current year. The 4-H member must submit an awards program record book and interview in the year he or she is to be considered for the award. Application should reflect that the applicant is an active 4-Her.

## **Silver Star Award:**

Must be intermediate or 14 years of age, by September 1, must turn in a competitive record book and complete Silver Star interview and application. See application. Can only win this award once.

## **Bronze Star Award:**

Must be in second year with 4-H and in the junior age division by September 1. Must turn in a competitive record book and complete Bronze Star application and interview. Can only win this award once.

## **Danforth Award:**

This is a Leadership Award. Must complete a recordbook and interview and be 14 years of age as of September 1. May only win this award once.

# MEET THE TEAM



Bosque County Extension Office

104 S. Fuller

Meridian, TX 76665

Tel. 254-435-2331 – Fax. 254-435-6231

Email: [bosque-tx@tamu.edu](mailto:bosque-tx@tamu.edu)

Website: <http://bosque.agrilife.org/>

Office Hours: M-Th 8AM to Noon, 1pm to 5pm

F 8AM to Noon, 1pm to 4pm

**Terry Taylor**

Family & Community Health

County Extension Agent

[Terry.Taylor@ag.tamu.edu](mailto:Terry.Taylor@ag.tamu.edu)

**Chelsea Dorward**

Agriculture / Natural Resources

County Extension Agent

[Chelsea.Dorward@ag.tamu.edu](mailto:Chelsea.Dorward@ag.tamu.edu)

**Kaitlin Gunter**

4-H Program Assistant


[Kaitlin.gunter@ag.tamu.edu](mailto:Kaitlin.gunter@ag.tamu.edu)

**Linda Smith**

Office Manager

[linda.smith@ag.tamu.edu](mailto:linda.smith@ag.tamu.edu)

## Helpful 4-H Websites

Bosque County Extension Website	<a href="http://bosque.agrilife.org/">http://bosque.agrilife.org/</a>
Bosque County 4-H & Youth Development 	<a href="https://www.facebook.com/BosqueCountyExtension">https://www.facebook.com/BosqueCountyExtension</a>
District 8 4-H Website	<a href="https://d84-h.tamu.edu/">https://d84-h.tamu.edu/</a>
Texas 4-H Home Page	<a href="http://texas4-h.tamu.edu/">http://texas4-h.tamu.edu/</a>

Educational programs of the Texas A&M AgriLife Extension Service are open to all people without regard to race, color, sex, religion, national origin, age, disability, genetic information, veteran status, sexual orientation or gender identity.

Texas A&M University System, U.S. Department of Agriculture, and the County Commissioners Court of Texas Cooperating  
Bosque 4-H is Tree Nut & Peanut Free.